



PRESIDENT'S MESSAGE

by Wally Moen

I am starting this out a little differently. With the warm weather and the sun beating down on us we need to use sunscreen and wear wide brim hats. I just had another run-in with skin cancer, and it was bigger than I anticipated. I was at the dermatologist for 6 1/2 hours, as they did 3 different surgeries, but they got it all. So, if you see a mole or something that just isn't right, have it checked out.

We are happy to have Don Evans, Operations Manager, back after his leave of absence. Don and Paul Strater have been busy getting things organized. Cheryl Reese, Education Coordinator, had us busy with many school tours this spring.

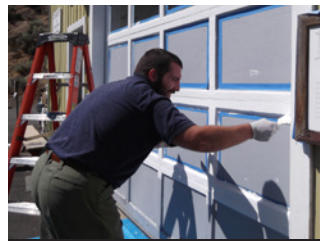
The volunteers have been busy fixing things up and keeping the museum working. The front of the museum is the first thing visitors see and there is a new handicap rail for the railcar, the Youngs cabin has been painted and the doors on Building 1 are being painted. Of course, as with most improvements when they got the old paint off, they found one of the roll-up doors was in bad shape so now it needs more work. We had a young man



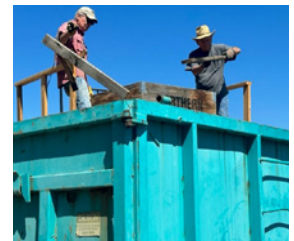
Lowell Romfo cleaning scrap metal for recycling. Nick, Wally & Mike waiting to load the bin



Bill on forklift while Mike & Vaughn fill metal recycling bin



Tyler Conrad painting the roll-up doors of Building 1



Terry Stewart & Wally Moen loading the dumpster with debris to clean the grounds



Day 1 of concrete pour at base of post for John Deere sign. Mike Haider, John Kobli, Vaughn Warren, Nick Schultz



Day 2 adding gravel with the concrete inside sign post. Mike, Nick, Vaughn, Bill McLaughlin



John Kobli spreading gravel in Building 18, while Kent Blomgren levels it

do some community service work at the museum and he cleaned windows, trimmed trees, spread gravel, installed more bark, and anchored many of the garbage cans to posts so they don't keep blowing over.

A new base has been installed by the Lindeman building for the John Deere sign and this required a lot of concrete. The kiddie train has been redesigned so there have been growing pains to get it operational. Most recently, air vents have been cut in the coal car for cooling the engine. The Klingele shop crew has been busy working on equipment and getting ready for the Pioneer Power Show the third weekend of August. Mike Stump has been cleaning up many of the tractors that have been restored and he has made the paint jobs look brand new again. Thank you, Mike, for the nice job.

Building 18 is now empty as we are going to put in a drain to remove the water that collects and install netting to keep the birds out, then park restored tractors in the building. The Danner building crew has restored the Case DC tractor. The packing line apple-sizing chain broke and we hope to get parts to have it working in time for the Pioneer Power Show.

The commanders of the Civil War reenactors have asked if anyone has any split rail fencing that they are taking out. They would like to use it in the battlefield. The fence would be stored at the museum.

Thank you for your membership and a special thanks to those who volunteer because they keep the museum going.

THANKS TO OUR VOLUNTEERS AN AMAZING JULY!



Terry Stewart, Greg Wilder & Tami Walker working on Merry-Go-Round in Farmstead



Harvey Cleem and Tami using chalk-line to mark a straight line at top of Merry-Go-Round base



Pat Bean & Rob Gallion getting ready to replace the top on the 1903 Oldsmobile



Casey Stenhjem working in the dahlia garden. He also has many kinds of vegetables planted.



Bill Driskill & Jim Kabrich replacing the roof on the forklift garage in April 2022, five months before Bill passed at 92



Jerry Warner, Wally Moen & Terry Stewart replacing the flags along the entry road. Flags must be changed twice a year



Kent Blomgren cutting off end of flag poles to make them fit into the bracket



Pro Ag Services installing bird netting in the new Stuart Gallion Building



Dick Drew, Vaughn Warren, Lowell Romfo, Mike Haider ready for work in their new multi-pocket aprons



Carol Blomgren doing data entry



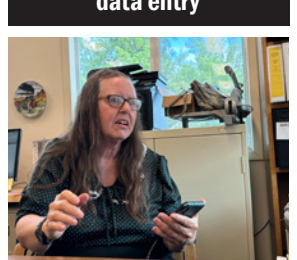
George Nix marking the area for the relocation of the round pen used during horse training



Alan Geho & Dave Sheuffele putting together the round pen. George on forklift providing the 'lift'



Alan directing George as he moves the horse tack storage shed into its new location



Effie Burton downloading photos from a phone to the computer



George Streby getting storage barrels ready for donated anti-freeze



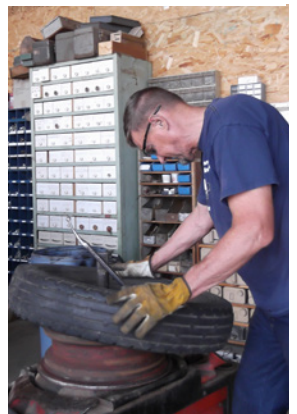
Mike Stump sanding the water truck air cleaner



Bill Allen welding the valve at top of water truck



Kent putting air in the 10 tires on the water truck



Jim mounting the tire & tube for the 1956 Minneapolis-Moline UTS tractor

Administrator Report by Paul Strater

The Washington Museum Association Annual Conference was held in Yakima this year and had about 100 attendees. It is easy for those of us who volunteer at the Ag Museum to feel that our museum is so unique that we are rather “on our own”. The conference focused on the similarities between all the different museums in the state. One of the primary topics was finding volunteers and finding funding sources. Details were shared about funding opportunities coming up in 2024 so we can start preparing now.



Education Coordinator Report by Cheryl Reese

After several years of little or no tours from school groups and others because of COVID, spring 2023 got off to a GREAT start. Our first school field trip was with a small home-school group from Holy Family Co-op on April 26th.

On April 30th we hosted a Seventh day Adventist group called 'The Adventurers'. Every year they pick a place they have never been to before to have a “Family Fun Day”. In November of last year, they contacted us about hosting them for their 2023 trip. The closest families came from the Tri-Cities area, and some came from as far away as Montana. Their original estimate was to bring about 150-200 people. The final count ended up closer to 450. We organized their visit like our Grand Opening event in April. The families visited the exhibits on their own schedule in the morning, took a break for lunch, and then spent a couple more hours exploring the museum grounds before heading home late in the afternoon. Fred and Ruth opened the Letterpress Museum and did several 30-minute demonstrations.

May brought a visit from Riverside Christian second graders from Yakima, Ahtanum Elementary first graders from West Valley and fourth graders from Lincoln Elementary in Ellensburg. The schools had such a great time that they told us that they wanted to make the field trip a yearly event. Also in May, Ray Harris from Eisenhower High School FFA brought a group of students to participate in tractor games and tour the museum grounds.

During May and June, Tiffany Bishop from the Yakima Basin Environmental Education Program brought groups from different schools to Ahtanum Creek in Fullbright Park to study and release fish. After the classes were finished, the students and their teachers did self-guided tours of the museum grounds. The students ranged in age from elementary to high school. Many expressed interest in coming back with their families during the summer to spend more time exploring the museum grounds. The final group to come in June was a small home-school that toured the museum on their own.

I love organizing these field trips. It does, however, seem like we have JUST enough volunteers for the exhibits. Please consider volunteering a bit of your time to make these trips happen. They are usually no more than 3-4 hours long from start to finish. We are glad to help you find an exhibit that interests you and teach you what you need to know while you are there.



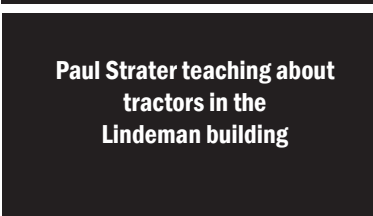
Marian Easton-Dykes describes the Amos cabin



Effie Burton demonstrating butter churning



Greg Wilder explaining the model train layout in the railcar



Paul Strater teaching about tractors in the Lindeman building



Vaughn Warren assisting as students grind coffee



Rich Bright giving a lesson about horses

HISTORY SPOTLIGHT

BEAN SPRAYER

from the Central Washington Ag Museum

If you're like most people who aren't directly involved with agriculture, and maybe even if you are, when someone says, "bean sprayer", you think of a machine to apply spray onto beans. This is rarely what is meant, as Bean is the name of what was, at one time the largest manufacturer of orchard spray equipment in the world. The crew in the Klingele shop is working on restoration of a horse-drawn Bean sprayer, though before we acquired the unit, it had been converted to tractor-pulled. This Bean sprayer has a 6 HP, 800 RPM Cushman engine with a hexagonal radiator behind the flywheel.

As of this writing, both the spray pump and the engine work. Before the Power Show, the plan is to mount the engine back onto the spray rig so that it can be used to demonstrate orchard spraying during the Equipment Parade. The fuel pump, magneto, and carburetor were missing when restoration began, and those parts had to either be manufactured or replacements found in the "bone yard". The auxiliary fuel tank that had been added was removed and the engine is now using the original fuel tank. The inside of the wooden tank has been coated with Flex Seal so it will hold water.



John Bean, successful inventor

At 62, John Bean, a successful inventor, retired to Los Gatos, California in 1883, and bought ten acres of almond orchard. He soon found that he had to spray insects that threatened to eliminate his whole crop, but the only sprayers available were hand-operated, single-action pumps with inadequate pressure to reach the tree-tops. In a little shed behind his house, Bean built a hand spray pump, based on the double-acting, continuous flow pumps he'd invented for use in deep wells powered by windmills.

First demonstrated at the California State Fair in 1884, the high-pressure constant stream of the Bean sprayer revolutionized the orchard sprayer business. The Bean Spray Pump Company (BSPC) was established to manufacture and sell these hand pumps that were in high demand. It wasn't until about 1910 that the BSPC felt the need to add power to the sprayers. Their first unit used a 2 HP Fairbanks-Morse gasoline engine mounted on their horse-drawn spray rigs. In 1914, 3 HP Novo engines were being used.

The BSPC hired E.B. Cushman as head of their Engineering Department, who along with his brother had started the Cushman Motor Company. Cushman was tasked with building a self-contained engine that was the same size yet had twice the horsepower as the Novo. In early 1920 they had a new, totally enclosed vertical engine which was produced in 4 HP and 6 HP sizes. The first engines had a circular, stationary radiator enclosed inside the single flywheel. After only 800 of this design were made, they changed to a hexagonal radiator behind the flywheel and in later models had a taller, rounded top radiator with straight sides. Many other improvements were made between 1921 and 1927 when the last run of castings was produced.



The Bean sprayer before restoration was started



The completed Bean sprayer restoration showcases the amazing work of our museum volunteers. The before and after photos are truly remarkable

While orchard sprayers were still the major product of the BSPC, with their expansion into other products such as plows, tractors, high-pressure fire pumps and many other lines, the name was changed to The John Bean Manufacturing Company. In 1928, through buyouts and mergers with other companies that manufactured food industry equipment, the John Bean Mfg. Co. became the world's largest food processing machinery manufacturer, and the name was changed to Food Machinery Corporation, or FMC. The John Bean name appeared on the firm's pumps and sprayers until 1972 when FMC divested itself of the pump division. FMC is still in business making agricultural, industrial, and specialty chemicals.

Operations Manager Report by Don Evans

We continue to work towards opening opportunities for live streaming of demonstrations from the museum grounds. To do this requires a much higher upload and download speed than our current Internet service provider can offer. I'm happy to say that we installed a Starlink satellite antenna at the end of July and our download speeds were measured at 150 Mb per second; and our upload speeds were roughly 30 Mb per second. These speeds are more than adequate to operate all the information technology at the museum, and to potentially stream video to schools and other locations.



Bill McLaughlin & Don Evans pulling the cable through the office wall to install the Starlink satellite antenna

Last summer, we contracted with Guardian Security to install six Internet Protocol based CCTV security cameras to provide real-time monitoring of the museum grounds. When the installer came, it was discovered that our Internet download speeds were too slow, so we were required to find a more suitable Internet service provider. The Starlink system has now given us the ability to go back to Guardian and request the full installation of those cameras.

We also explored the possibility of clearing the crack willows from along the creek for the purpose of increasing visibility of the museum from both the roadway and the park. After researching the various options of tree removal, and consulting the Yakama Nation, we found that this was probably not going to be a fruitful endeavor and we have shelved the project.

As part of our efforts to mitigate “siloeing”, we have set as one of our goals the opening of better communications. Transparent communication makes sure everyone is “on the same page”, and allows us to better coordinate the various museum projects. I've been researching various applications however, due to varying degrees of technological knowledge I have yet to find an application that would be suitable. I continue looking for an application that would be amenable to all board members and volunteers.

Paul Strater and I have set as another of our goals to join with the Yakama Nation to possibly have them host live demonstrations or having a fixed exhibit at the museum. We are currently working on points of contact to get this project up and running.

Please feel free to contact Paul or me if you have any questions on these projects. I would like to see other projects initiated in operations management.

2023 MEMBERSHIPS

Through August 1, 2023

\$500 & Up

Rob Gallion, Jean's Cottage Inn, Cheryl & David Stave, Yakima Co-operative Association

\$250 & Up

Burrows Tractor, Gary & Kris Green, Harris Farms, Pape Machinery Ag & Turf, Kathy Schultz, Nick Schultz, Curtis & Mary R Sundquist, Sandi Vogel

\$100 & Up

Ruth Bishop, Jan Buckley (Estate of Bill Driskill), Dave Calhoun, Kathy Kramer (Central WA Fair Association), Joanne Chapa (Chestnut Place Properties LLC), Darrell & Joyce Downing, Larry Dykes & Marian Easton-Dykes, Kathy Fletcher, Jim & Cheryl Gamache, Bob Gimlin, Ross & Patricia Herber, Rod & Donna Hodel, Fred Hutchinson, Instant Press Inc, Scott & Lyndee Campbell (K-5 Contracting Inc.), Jim Kabrich, Nancy A Kenmotsu, Tony & Melody Pottratz, Robin & Jean Robert (Robert Ranch 5 + 1 LLC), Paul & Patty Schafer, Mike & Brian Schrantz, Ella Schreiner Family, Gerald Severance, Al & Elin Showalter, Diane Grignon & Ben Snowden, Ken & Millie Stenehjem, Margaret Morris & Ken Tolonen, Yakima Valley Horseless Carriage Club, Ron Zirkle

\$75 & Up

Ellen Allmendinger, Tim & CC Gamache, Diana Kempf & Robert Landles, Todd Schultz, Misti Uptain

\$50 & Up

Bill Allen, Sandy Allen, Robyn Joye Auerill, John A Baule, Becky Bishop, Steve Bishop, Carol Blomgren, Garrett Blomgren, Greg Blomgren, Karen Blomgren, Kent Blomgren, Sharon & Ron Bounds, Randy E Boyer, Barney E Brown, David Brown, Buena Grange #836, Bill Horst, Howard & Evelyn Campbell, Alfredo Carrillo, Rafael Carrillo, Eugenia Carvo, Harvey Cleem, Matt R Cleem, Purdy G Conrad, Harold & Betty Cook, Rosemary Corn, Juan Cruz, Douglas D'Avis, Vanessa Dietrich, Karen Dillon, Richard & Rebecca Drew, Opal Duffield, Adrian Enriquez-Cruz, Anna Fellmann, Ken Tolonen Fruitvale Grange #348, Steven E Fund, Tonie Fund, Alan

Geho, David Geho, Kim Geho, Jaime Gonzalez, Clay & Lisa Graham, Susan Branch (Grange Library), Andy & Peg Granitto, Don Groth, Mike Haider, Sylvia Hall, Norma Haney, Lynn & Tracy Harden, Laurie Harmon-Willard, Dale C Harris, Kathleen & Larry Hatcher, Timm Heberlein, Robert & Sandie Hennessy, John Hodgkinson, Dale Hoech, Roy & Janelle Moses (Holy Cow Natural Organic Beef), Kellen Hopkins, Reyne Jimenez, Karen Klingele, Brian L Knotts, John & Sally Kobli, Debra Lafave-Smith, Ron Lange, W. Eugene & Carole Lange, Merrill Waddle & Kimberly Lansing, Janet Larios, Lisa Lindholm, Mark Lindholm, Windy Lovejoy, Judy Markham, Alice May, Lukus & Kane Huss & Mark & Laura McDaniel, William McLaughlin, Dexter McNair Jr, Donna Miller, Tiffany Miller, Wally & Roberta Moen, Brian O Molina, Abigail Nickelsen, George Nix, Kate Olson, Kim & Michael Orr, Luis Ortega, Pacific NW Snowmobile Club, Rose Parker, Rod Patterson, Jim Warner (Perfection Tire), Dick & Janice Picatti, Don Picatti, Jim Polley, Peggy & Ellexis & Mark Rice, Michael Rogers, Lowell & Carole Romfo, Jose A Roque, Vivian Russell, Ken & Judy Ruthardt, Abraham Sanchez, Dave Scheuffele, Becky Scholl, Larry Scholl, Phil & Shirley Seghers, Kate Shire, Joseph Smith, Anand Srinivasan, Sathish Srinivasan, Terry Stewart, Jeanne Strater, Paul Strater, George Streby, Randy & Linda Sundstrom, Rebecca J Swanson, Richard Swanson, Kay Tandberg, Clyde & Merla Thysell, Chuck Tierney, Elizabeth Wade, Dwight & Rita Wagenmann, Jerry Warner, Ada Ruth Whitmore (Whoop-N-Hollar Ranch), Greg Wilder, Connie Williams, Paul Williams, Floyd A Wilson, James & Geraldine Honeyford (Windmill Farms), Ralph L Woodall Jr, John & Leslie Wornell, Marti Sondgeroth Yakima Rock & Mineral Club, Janna Hagarty (Yakima Valley Pomona #11), James A Yockey & Family

Memorials

Jim Warner

Remember a friend or loved one with a memorial gift to the Central Washington Agricultural Museum. Money from a memorial is used for additions and improvements unless otherwise designated. When you send a memorial gift it is helpful if you include the following information:

- Who to send the acknowledgment to along with the address.
- If available, we appreciate a copy of the obituary or a brief bio of the person.
- With a gift of \$25 or more the honored one's name will be placed on a memorial board. It is a tax deductible gift.

The acquisitions since the last newsletter:

- Yesterday Toys: Erector set and Electric stove from Floyd Wilson
- Velie Surrey Wagon from Teale Love
- Fully restored 1951 Case Tractor from Tim King



EVENTS COMING UP

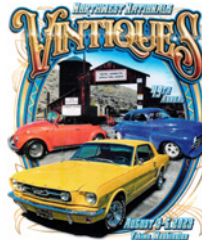
**Pioneer Power Show &
Swap Meet - August 19 & 20**
Vintiques UNRUN* - October 7
Agri-Copia - October 14 & 15

* Not a museum event

Phone: 509-457-8735

Email: info@centralwaagmuseum.org

www.centralwaagmuseum.org



Vintiques car club used an image of the museum entrance on the back of their 2023 t-shirt



The blacksmith shop was a popular attraction at this year's Old Town Days



Thanks again to the 100s of reenactors and the CWAM volunteers that help make Old Town Days possible!

BROUGHT TO YOU BY THE
CENTRAL WASHINGTON AGRICULTURAL MUSEUM

CENTRAL WASHINGTON AG MUSEUM UNION GAP, WA

Pioneer Power Show AND SWAP MEET
EST. 1981

SATURDAY AUG 19
SUNDAY AUG 20
8AM-4PM

FUN FOR THE FAMILY!

FEATURING MASSEY HARRIS POWER EQUIPMENT!

EXHIBITS	EVENTS	SWAP MEET
<ul style="list-style-type: none"> • Vintage Trucks • Vintage Single Stroke Engines • Quilt Display • Vintage Snowmobiles • Apple Packing Line Demos • Antique Sawmill Demos • Blacksmith Demos • Draft Horse Demos 	<ul style="list-style-type: none"> • Equipment Parade • Swap Meet • Drive the Mini Excavator • Tractor Pull* • Lawn Mower Pull* • Kid's Scavenger Hunt - Win a Bike! • Kiddie Train * Lawn Mowers Provided. Sign-Up to Join! 	<ul style="list-style-type: none"> • Vendors Welcome! • Fullbright Park in Union Gap, WA • Outdoor Spaces... 15' wide x 30' deep • Set-Up Begins 8am Friday 18th • Vendor Camping on Spaces, No Hookups • \$25/Weekend • Register: 509-930-2584

GREAT FOOD! JEAN'S COTTAGE INN SOUP R DAWGS

\$5 PER PERSON UNDER 12 FREE

Thank You Sponsors!

BURROWS MEDSTAR
Apple King TRANSIT RIDDCO
GOON
PACIFIC
HLA
SILVER SPONSORS
PLATINUM SPONSOR GOLD SPONSORS
FOR MORE INFO CALL 509-877-2645 | EMAIL: HONEY2243@YAHOO.COM

